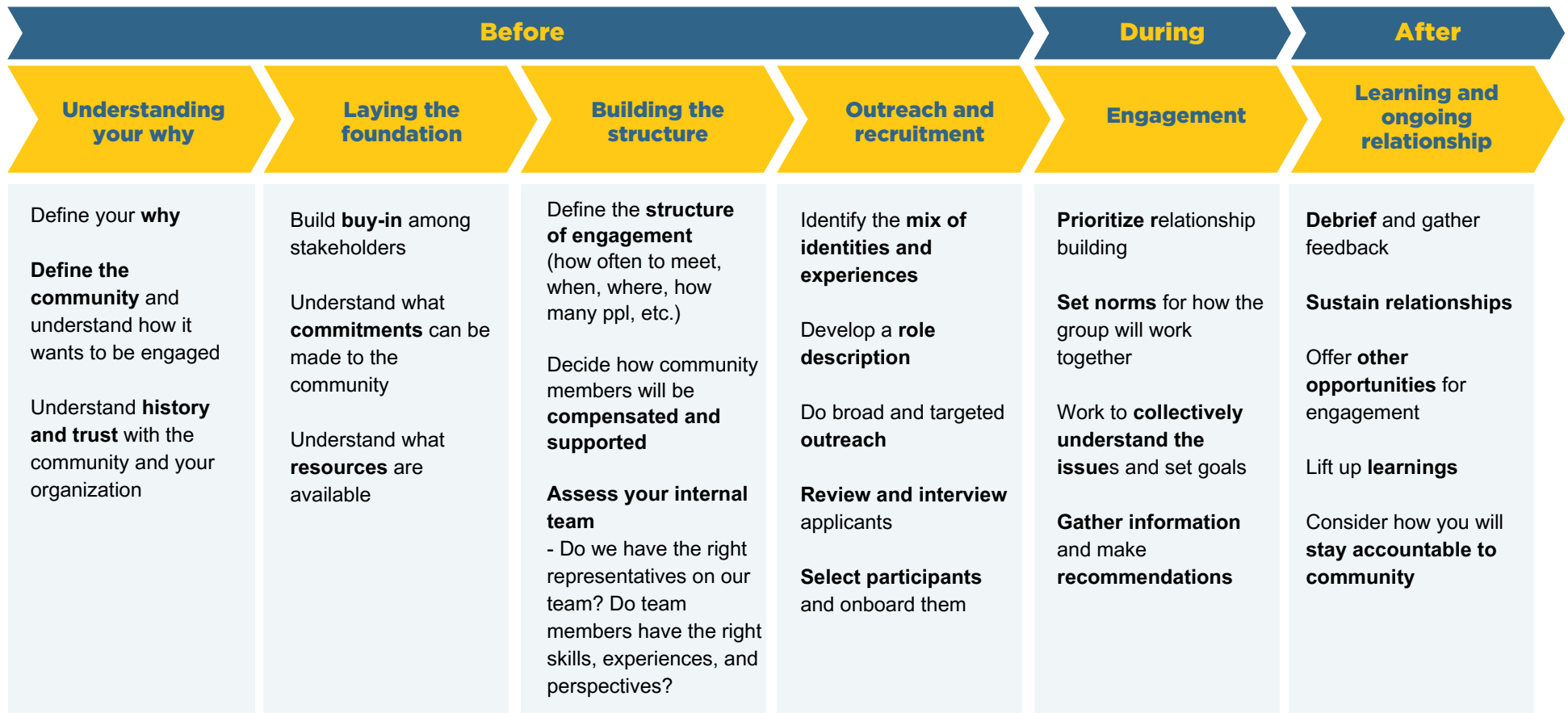


Sharing Power with Communities Toolkit: Starting Out and Making the Case

The resources offered in this toolkit are designed to guide nonprofit organizations, foundations, and folks working in the social sector in their pursuit of sharing power and resources with the communities they seek to serve. Toolkit resources include practical tips and guides for making the case along with facilitation guides and models for getting started.

Overview of Community Engagement Process

This guide is designed to offer you a general overview of the community engagement process. Please remember that authentically engaging community often requires more time than anticipated--do not rush the process. Be flexible and willing to make adjustments while centering the needs of the community throughout.



Community Wealth Partners is a social impact consulting firm guided by a vision of a world where all people have what they need to fully live into their potential, particularly those who are kept furthest from resources and power.

Get In Touch

hello@communitywealth.com
communitywealth.com